



# Bamberton Quarry **Mine Emergency Response Plan**

Date Revised: July 5th, 2023

**ACKNOWLEDGEMENTS**

This Mine Emergency Response Plan has been compiled from various public and private information sources, such as the *Health, Safety and Reclamation Code for Mines in BC, rev. 2017 (HSRC)*. The information contained herein is consistent known rules, regulations and best practices, and has been produced from the noted information sources. Any other use of, or reliance on this report by any third party is at that party’s sole risk.

**Table of Contents**

1.0 INTRODUCTION and PURPOSE ..... 1

2.0 MINE SITE LOCATION and OPERATIONAL INFORMATION ..... 1

3.0 HAZARD ANALYSIS OF OPERATION ..... 2

4.0 EMERGENCY PREPARDNESS ..... 2

5.0 PROCEDURES FOR HANDLING MEDICAL EMERGENCIES ..... 3

6.0 PROCEDURES TO FOLLOW WHEN CALLING FOR A PROVINCIAL AMBULANCE ..... 5

7.0 EMERGENCY NOTIFICATION CHART ..... 6

8.0 BAMBERTON QUARRY LOCATION MAP ..... 7

9.0 SITE CONTACT LIST ..... 8

## 1.0 INTRODUCTION and PURPOSE

The Mine Emergency Response Plan (hereinafter called the “MERP”) is intended to fulfil the requirements of the *Health, Safety and Reclamation Code for Mines in British Columbia, 2017*<sup>1</sup> (HSRC). The objectives of the MERP are to provide key officials, agencies, departments and employees within the mining operation with *general* guidelines to follow in the event of an emergency and an overview of their responsibilities during an emergency.

For the MERP to be effective, it is important that all concerned be made aware of its provisions and that every official, agency, department and employee be prepared to carry out their assigned functions and responsibilities in the event of an emergency. All mine personnel will receive a copy of this document, and will be instructed in regards to emergency procedures.

## 2.0 MINE SITE LOCATION and OPERATIONAL INFORMATION

**Mine Name:** Bamberton Quarry

**Type of Operation:** Construction Aggregate Quarry                      **Employees on Site:** 5 to 15

**Property Location Coordinates:** 48° 34' 55" N 123° 31' 18" W / U10 461271 E 5382098 N

### Directions to the Site:

The property is located 8 minutes south of Mill Bay. To access the property from Mill Bay travel south on the Trans-Canada Highway, exit to the right onto Mill Bay Road, turn right on Trowsee Road to the site.

The property is located 22 minutes north of Langford. To access the property from Langford travel north on the Trans-Canada Highway, exit to the right onto Bamberton Road, turn right onto Trowsee Road to the site.

### Contact Information

**Coast Mountain Resources Ltd. (Mine Operator):** 778-356-4056

**Mine Manager, Operations** 250-883-3645

admin@coastmountainresources.com

**Malahat Investment Corp. (Property Owner):** 250-743-3737

---

<sup>1</sup> [https://www2.gov.bc.ca/assets/gov/farming-natural-resources-and-industry/mineral-exploration-mining/documents/health-and-safety/code-review/health\\_safety\\_and\\_reclamation\\_code\\_2017\\_rev.pdf](https://www2.gov.bc.ca/assets/gov/farming-natural-resources-and-industry/mineral-exploration-mining/documents/health-and-safety/code-review/health_safety_and_reclamation_code_2017_rev.pdf)

### **3.0 HAZARD ANALYSIS OF OPERATION**

Quarries have high fatality and incident rates and are considered one of the most hazardous industries to work in. Accidents and fatalities are often associated with maintenance work, the use of vehicles, fixed machinery, falls from height plus working near rock walls and benches. Additional risks can be related to dust inhalation, exposure to hazardous materials, fire, use of explosives, and loud noise. Shift work, operating under time pressures and in challenging weather conditions may escalate the risk of hazards. Impairment and inappropriate conduct also threatens personnel safety.

To mediate potential health and safety risks associated with quarry operations, it is critical personnel are aware of existing risks, are able to identify and avoid hazards, and have the ability to immediately minimize threats in a safe manner using appropriate safety equipment and devices.

The mine site and operations must be inspected on a regular basis. Defects should be noted and records must be kept on all inspections and the action that was taken to mitigate against and control hazards. Annual reviews of potential risks must be completed by a trained and authorized company representative.

### **4.0 EMERGENCY PREPAREDNESS**

Preventing and responding to emergency situations is the responsibility of all mine personnel.

- Know your workplace and the work environment;
- Know how to get help quickly; and
- Know what to do in an emergency situation.

The following emergency response information, communication and equipment will be readily available on the mine site:

- Mine Emergency Response Plan;
- Personal cell phones and radios in all equipment and at Scale/Office building;
- First aid kits;
- Fire extinguishers; and
- Spill contingency equipment.

All personnel on-site will receive basic firefighting training, and all employees and contractors will be required to have at a minimum Level 1 and Transportation First Aid Certification to work on the site. There is one Level 3 First Aid trained employee at the property during regular work days.

The company or its contractors will provide and maintain first aid supplies and services. First aid supplies and designated services will be kept clean, dry and ready for use, and be readily accessible at any time a worker works in the workplace.

## 5.0 PROCEDURES FOR HANDLING MEDICAL EMERGENCIES

The following actions will be necessary during any medical emergency whether it is minor or life threatening. In the event of an incident, the attending first responder will use the following simplified **Priority Action Approach**:

### 1) Scene Assessment (also refer to Figure 1)

- **Identify hazards, ensure the scene is safe.** Do not proceed with patient assessment if it exposes you and/or the patient to further risk. Quickly move the patient to a safe environment and then perform the primary survey.
- **Identify the mechanism of Injury and how it may have affected the patient.** To better understand the seriousness of the injuries determine what happened; how much energy was applied to the patient; and to what part of the body and in what direction was the energy applied?
- **Identify the number of patients.** Determine if all persons involved in the accident are accounted for. If there is more than one patient, get help immediately.
- **Identify transportation needs.** The Mechanisms and types of injuries will determine transport decisions. Injuries such severe crush injuries, toxic-fume inhalation, drowning, burns and electrical injuries are examples that need rapid transport to hospital.

### 2) Primary Survey and Critical Interventions

The second stage of the Priority Action Approach is the primary survey which begins immediately after the scene assessment. This involves a rapid patient assessment to determine the presence of any immediate life-threatening injuries or conditions.

The assessment should take less than 2 minutes unless any life-threatening conditions such as cardiac arrest, airway obstruction severe respiratory distress or severe bleeding are identified. If the patient is responsive conduct a primary survey based on assessment of the ABCs.

- **A for Airway:** Establish and maintain open passage for air to enter and leave the lungs.
- **B for Breathing:** Determine whether the patient is breathing normally.
- **C for Circulation:** Check for signs of shock, bleeding and obvious fractures.

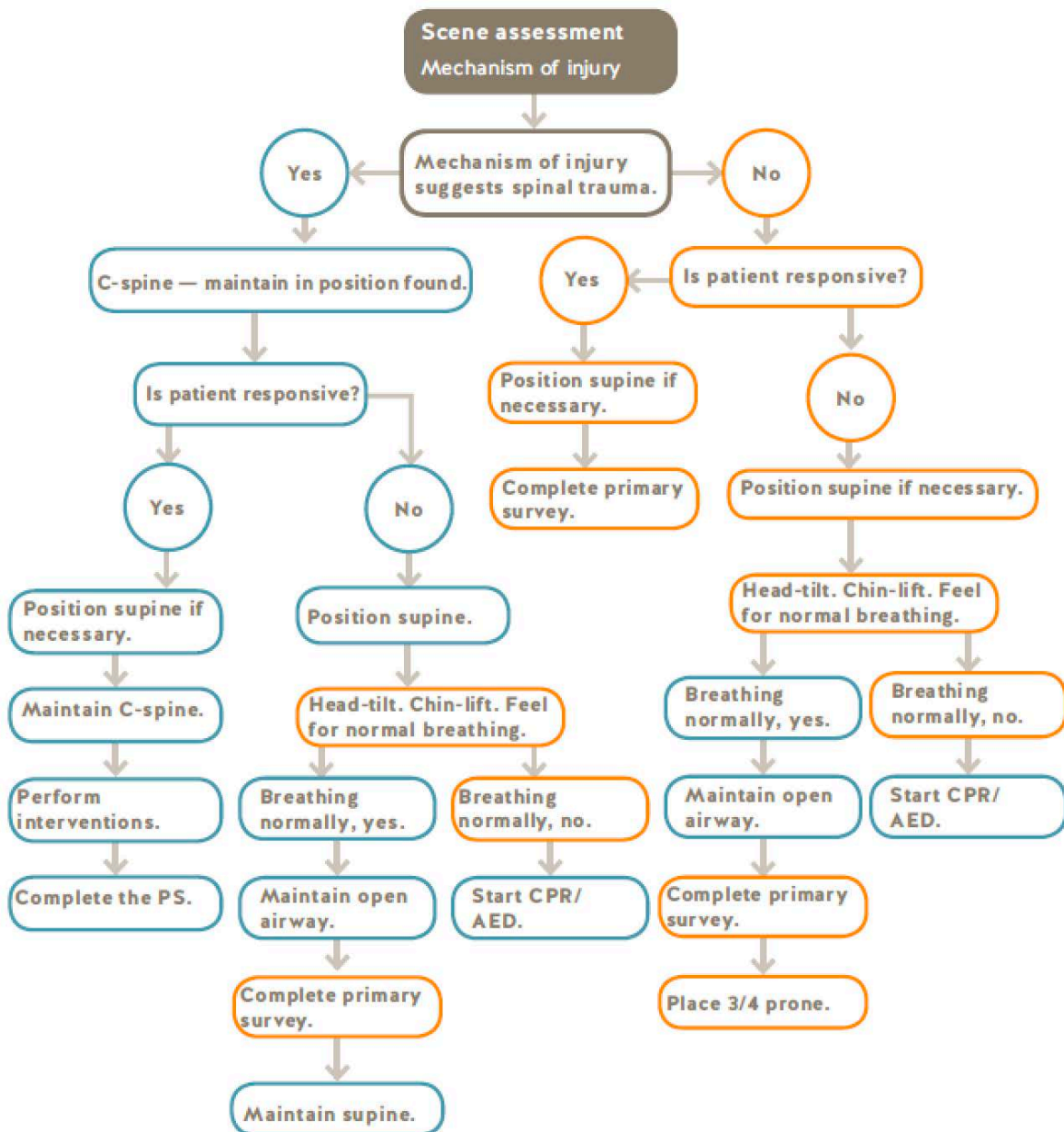
### 3) Secondary Survey

Complete a rapid (less than 10 minutes) but complete patient assessment. Areas of assessment include:

- **Vital Signs:** respiration rate and quality, pulse rate, level of consciousness, and skin colour, temperature and condition.
- **Patient History:** complaints and history of current injury or illness, allergies, medications, past medical history.
- **Head-to-toe examination:** systematic assessment for injuries and/or painful areas not obvious or the patient is unaware of.

Figure 1. Scene assessment flow diagram to assist in understanding the process of determining the mechanism of injury  
(Occupational first aid, a reference and training manual, 2018).

**Priority Action Approach and Critical Interventions**



## 6.0 PROCEDURES TO FOLLOW WHEN CALLING FOR EMERGENCY ASSISTANCE

If instructed by the Mine Manager, Supervisor or First Aid Attendant to contact 911 for police, fire or medical emergencies, follow the instructions:

### **Dial 9-1-1**

When prompted, answer the call taker's questions. Listen carefully, speak clearly and try to remain calm. Questions will include the following:

- Do you need police, fire or ambulance?
- Which municipality are you calling from? Cowichan Valley Regional District
- What is your contact phone number? Mine Office 778-356-4056 or caller's cell number

Stay on the line and follow instructions. Your 9-1-1 call taker will stay on the line with you to make sure your call is answered by the agency you need. Don't hang up until the call taker says it is okay to disconnect. Know your location at all times and communicate it when you are asked.

- Bamberton Quarry and Industrial Park located at 1451 Trowsse Road, Bamberton.
- Located east of the Trans-Canada Highway, 7 kilometres south of the community of Mill Bay on southeastern Vancouver Island.
- Access from the Trans-Canada Highway to the mine site is from the Mill Bay Road exit or the Bamberton Road exit; follow Trowsse Road south to the main Mine Office.
- Mine Office is located at coordinates:
  - Latitude: 48° 35' 24" N / Longitude: 123° 31' 30" W (degree/minutes/seconds)
  - Latitude: 48.5900 N / Longitude: 123.5250 E (decimal degrees)
  - UTM 10U 461271 E / 5382098 N
- Helicopter landing pad is located at coordinates:
  - Latitude: 48° 35' 17" N / Longitude: 123° 31' 27" W (degree/minutes/seconds)
  - Latitude: 48.5880 N / Longitude: 123.5243 E (decimal degrees)
  - UTM 10U 461285 E / 5381780 N

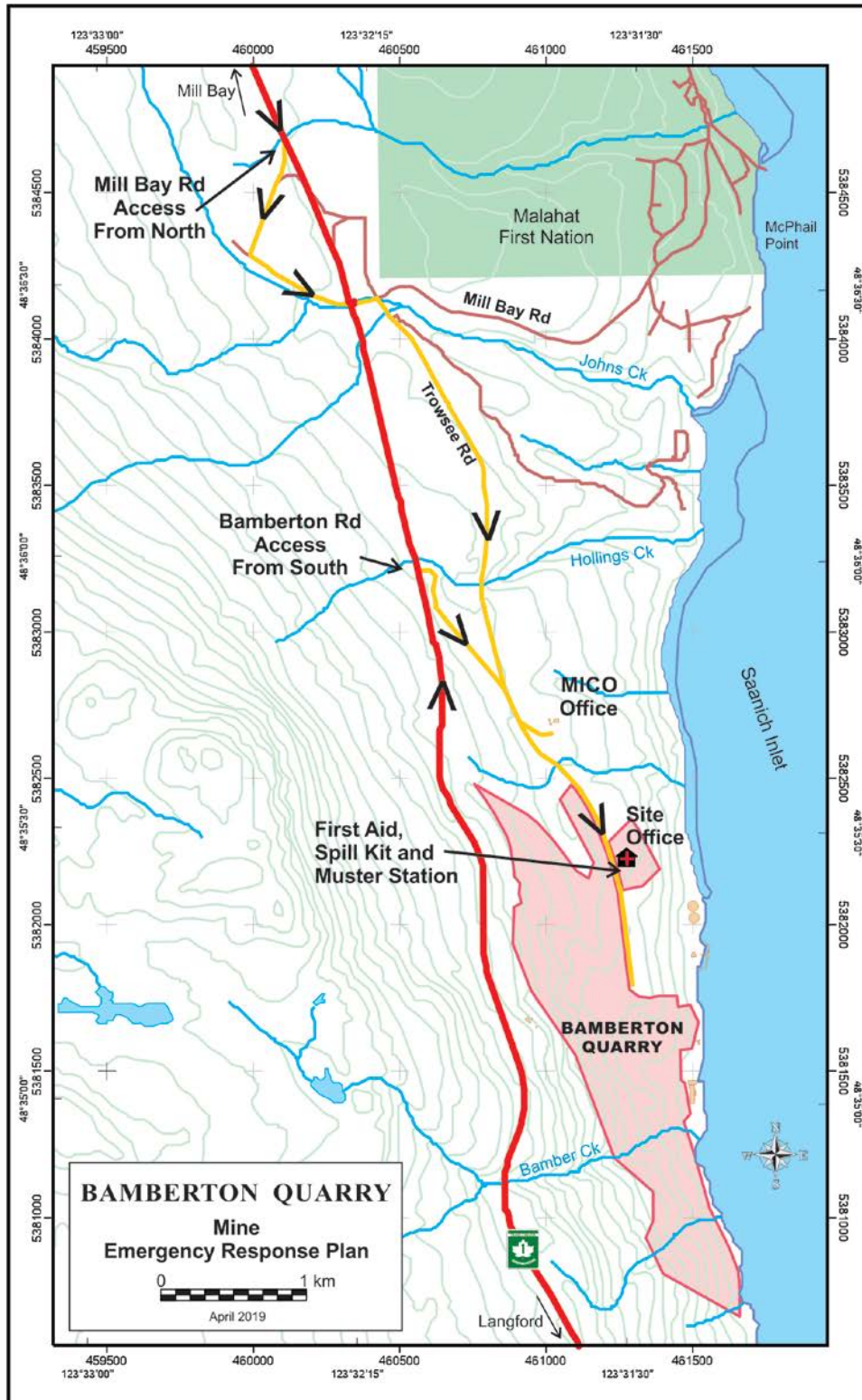
Be prepared to provide detailed information regarding the emergency situation.

## 7.0 EMERGENCY NOTIFICATION CHART

MEDICAL EMERGENCY	CONTACT INFORMATION
General Emergency Number	<b>911</b>
BC Ambulance Service	<b>911</b>
RCMP - Shawnigan Lake	911 / 250-743-5514
Poison Control	1-800-567-8911
Cowichan Hospital (Duncan)	250-709-3000
<b>SPILLS AND DISASTER</b>	
Provincial Emergency Program (PEP)	1-800-663-3456
Forest Fire Reporting	1-800-663-5555
Mill Bay River Rescue (Hall 1)	250-743-5563
Malahat Volunteer Fire Department	250-743-2103
Northwest Response Ltd. (Ray Hollenberg)	250-847-4556
Environment Canada (Emergency Reports)	1-604-666-6100
<b>COMPANY CONTACTS</b>	
Coast Mountain Resources Office	778-356-4056
Manger, Operations	778-356-4056
<b>GOVERNMENT AGENCIES</b>	
Health and Safety Inspector BC Ministry of EMPR	778-698-7221 (Work)
Inspector of Mines, Permitting BC Ministry of EMPR	778-698-7294 (Work)
Conservation Officer	1-877-952-7277
Worksafe BC	1-888-967-5377
<b>HELICOPTER TRANSPORTATION</b>	
West Coast Helicopters (Nanaimo)	1-250-754-5448
Blackcomb Helicopters (Victoria)	1-778-330-1346



## 8.0 Bamberton Quarry Location Map



## 9.0 Bamberton Site Contact List

<b>Non-Emergency Contacts</b>		
Mill Bay Fire Rescue (Hall #1)	250-743-5563	2675 Lodgepole Road, Mill Bay
Malahat Fire Hall (VFD)	250-743-2103	935 Whitaker Road, Malahat
Mill Bay Ambulance (Station 137)	250-743-3239	955 Shawnigan-Mill Bay Rd, Mill Bay
Shawnigan Lake R.C.M.P.	250-743-5514	2780 Shawnigan Lk Rd, Shawnigan Lk.
WorkSafeBC	1-888-621-7233	Emergency Contact
Jim Dunkley, Sr. Inspector of Mines	Work: 778-698-7294 / Cell: 250-886-4957	Victoria BC
<b>Coast Mountain Resources Ltd.</b>		<b>Office - 778-356-4056</b>
Rick Hannah	778-356-4056	Quarry Office
<b>Malahat Investment Corporation (1028706 BC Ltd)</b>		<b>Office - 250-743-3737</b>
Rene Bourdin	250-743-3737	
Ian Davis	250-732-3581	Site Maintenance
Paul Harry	250-710-9126	Site Maintenance
<b>Heavy Metal Marine &amp; Equipment</b>		<b>Office - 250-733-2991</b>
Brian Freethy	250-883-0693	Owner/Manager
Ashleigh Magill	250-733-2991 Ext. 201	Safety/Office Administrator
<b>Lehigh Cement Ltd.</b>		<b>Office - 250-743-5511</b>
Dave Garnett	250-480-9126	Bamberton – Lead Hand
Steve Lonneberg	250-709-1761	Bamberton – Loading Attendant
Rockie Collins	250-213-8355	Lehigh VMD – Operations Superintendent
<b>MacDonald &amp; Lawrence Timber Framing</b>		<b>Office - 250-743-8840</b>
Steve Lawrence	250-710-2585	
John Dix	250-888-3134	
<b>Ruskin Construction</b>		<b>Office - 250-360-0672</b>
Greg Brown	250-889-1970	Marine Division Manager
<b>Steelhead – LNG</b>		<b>Office - 604-235-3800</b>
Megan Chadwick	604-318-5594	Training Coordinator